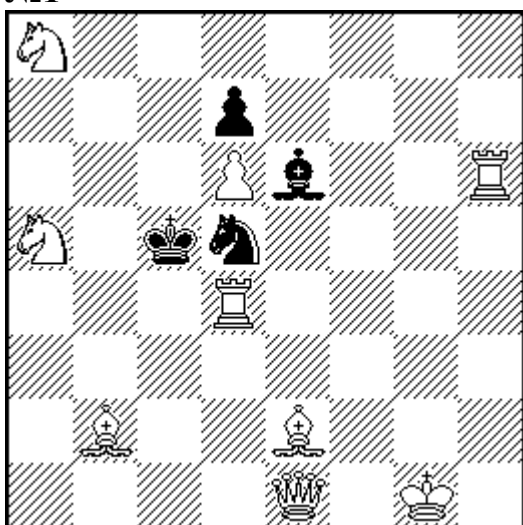


36 MIĘDZYNARODOWE MISTRZOSTWA POLSKI
W ROZWIĄZYWANIU ZADAŃ SZACHOWYCH (Bydgoszcz, 2-3.03.2013)

1. runda: DWUCHODÓWKI (20 min.)

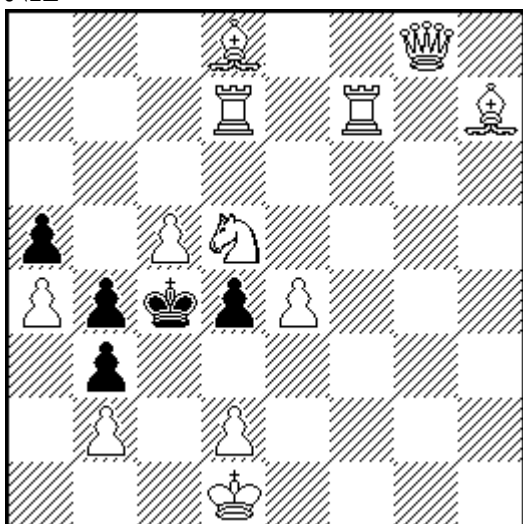
№1



#2

9+4

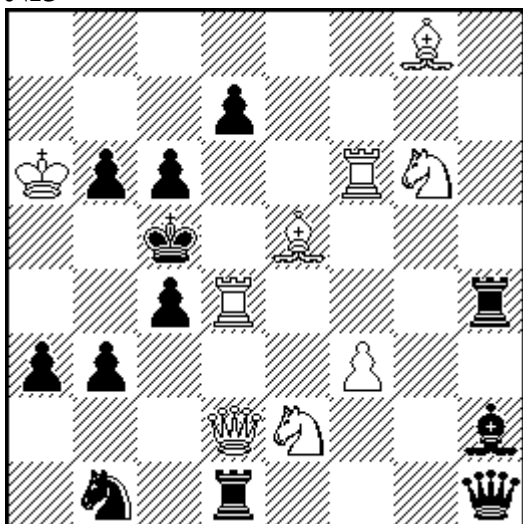
№2



#2

12+5

№3

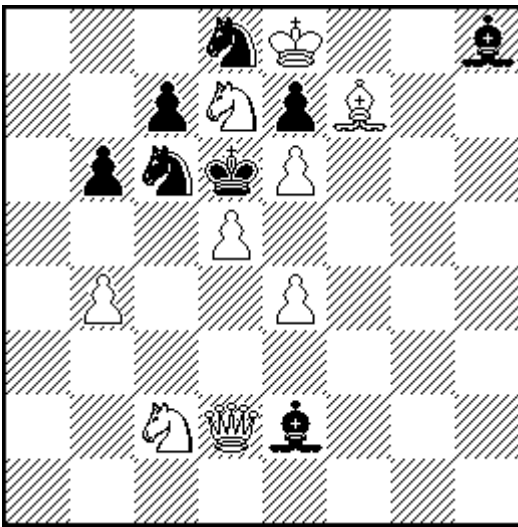


#2

9+12

2. runda: TRZYCHODÓWKI (60 min.)

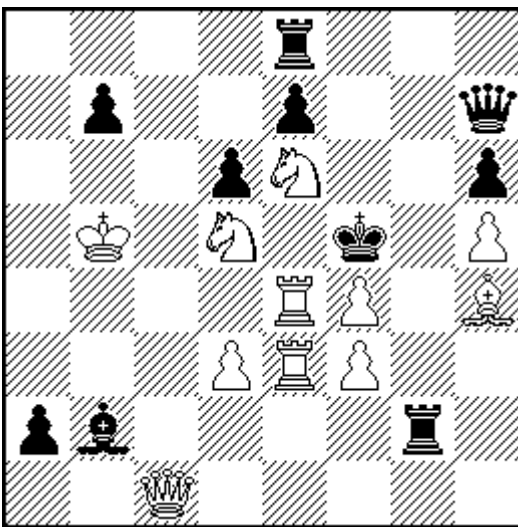
№5



#3

9+8

№6

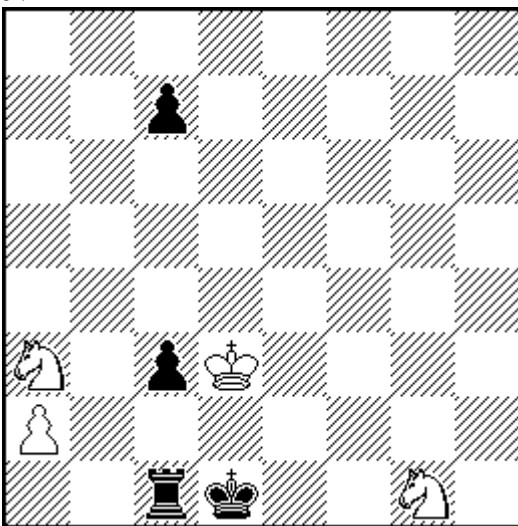


#3

11+10

3. runda: STUDIA (100 min.)

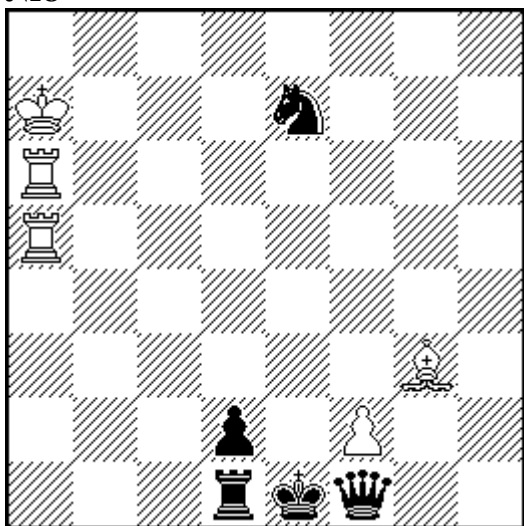
№7



+

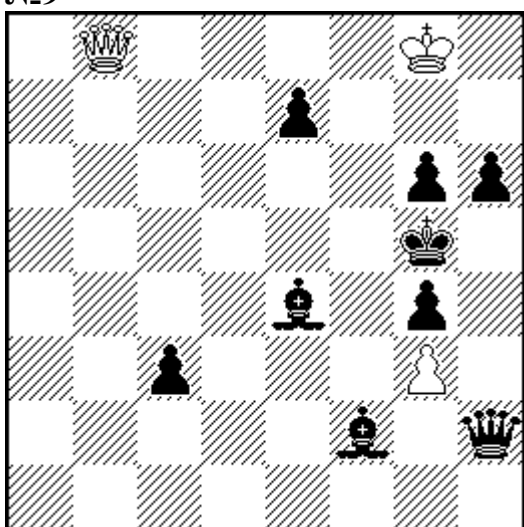
4+4

№8



= 5+5

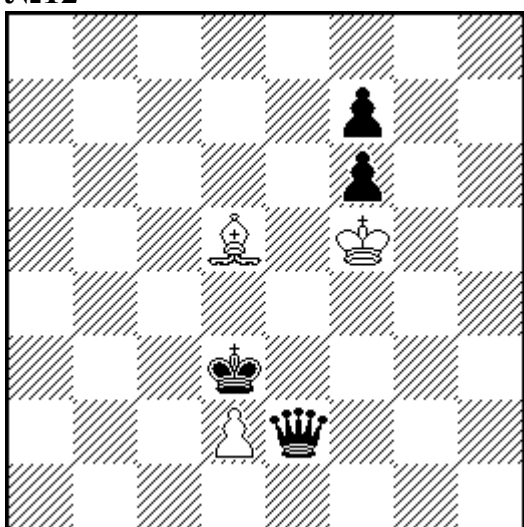
№9



+ 3+9

4. runda: MATY POMOCNICZE (50 min.)

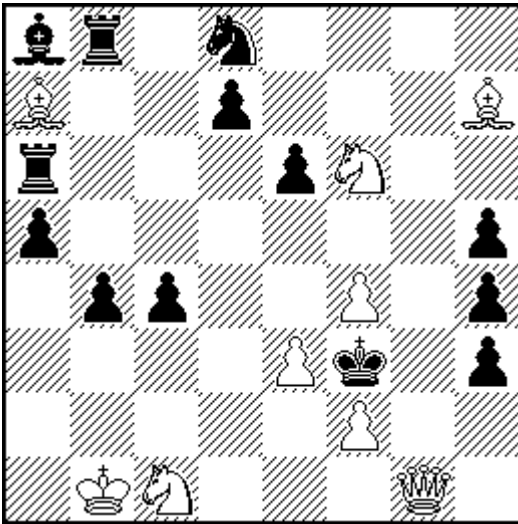
№12



H#6 2 Sol 3+4

5. runda: WIELOCHODÓWKI (80 min.)

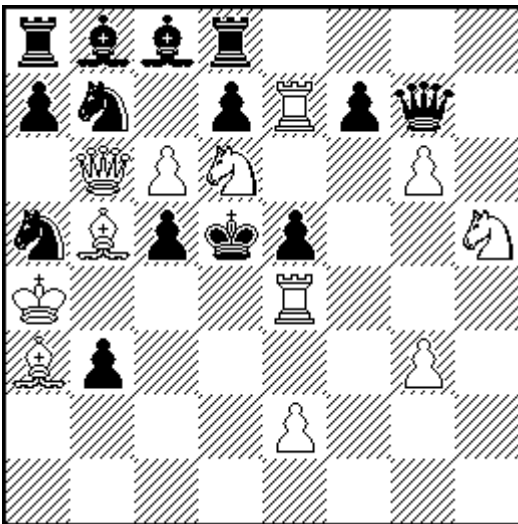
№13



#4

9+13

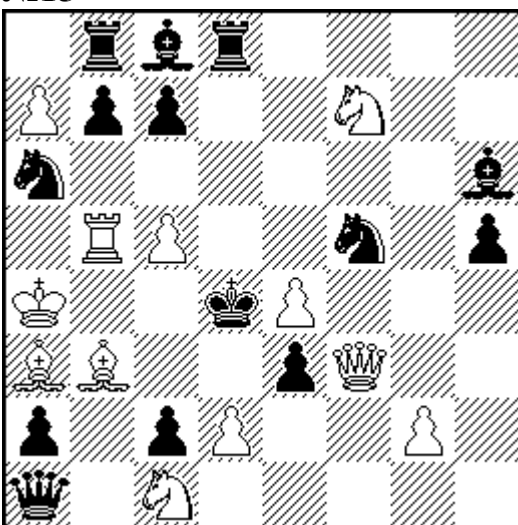
№14



#4

12+14

№15

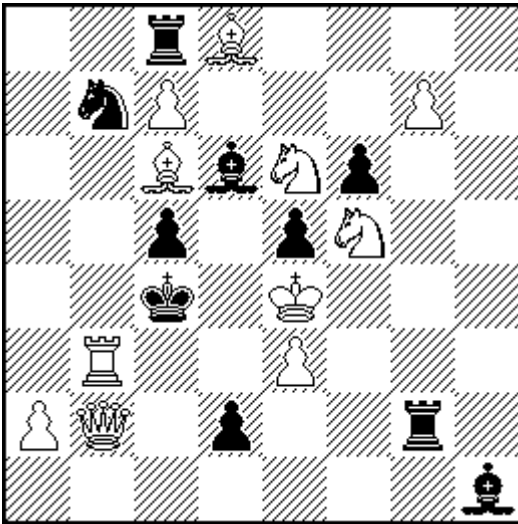


#5

12+14

6. runda: SAMOMATY (50 min.)

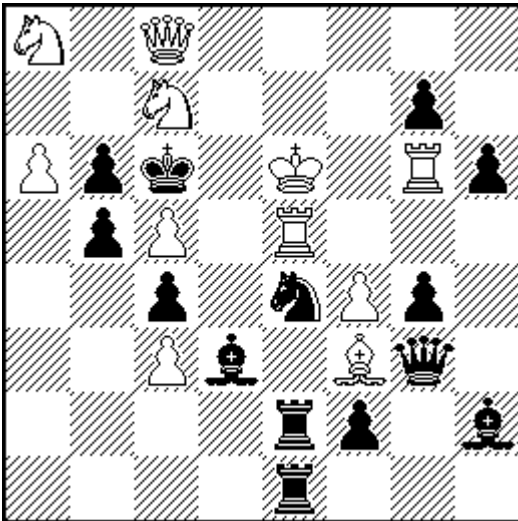
№16



S#2

11+10

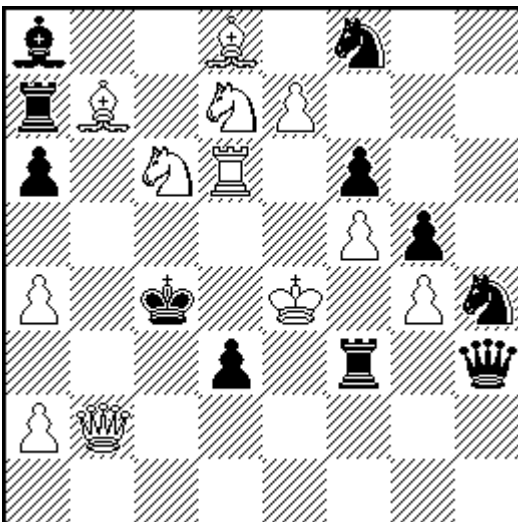
№17



S#3

11+14

№18



S#5

12+11