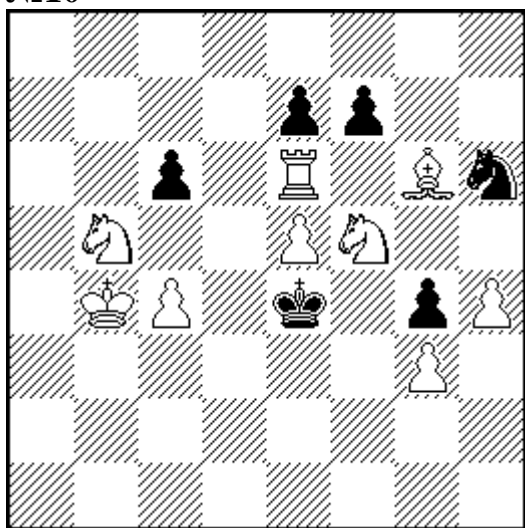


XI MIĘDZYNARODOWE GRAND PRIX WARSZAWY
W ROZWIĄZYWANIU ZADAŃ SZACHOWYCH (24-25 listopada 2012 r.)

4. runda: MATY POMOCNICZE (50 min.)

№10



H#2 4 Sol 9+6

Kenan VELIKHANOV

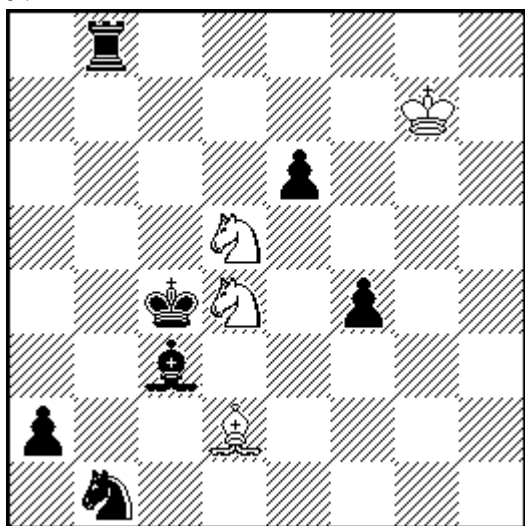
The Problemist

2012

(Version D.Shire)

- 1.f:g6 ♖:e7 2.♔:f5 ♘d6# (1,25)
 1.f:e6 ♘:h6 2.♔:e5 ♘:g4# (1,25)
 1.c:b5 ♘e3+ 2.♔d4 ♘c2# (1,25)
 1.♘g8 ♘fd4+ 2.f5 e:f6 e.p.# (1,25)

№11



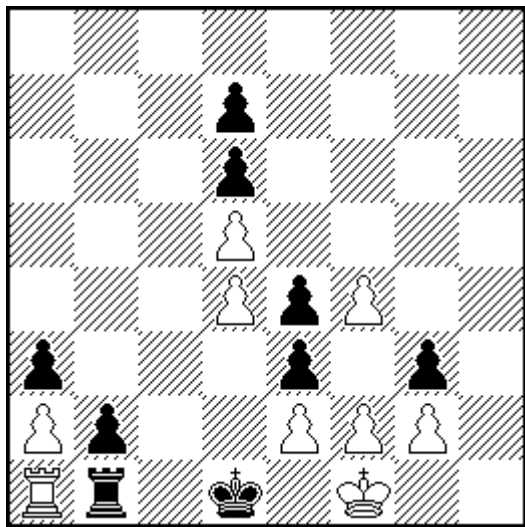
H#3 5 Sol 4+7

Vasyl KRYZHANIVSKY

Please, do not copy this original problem

- 1.♖b3 ♘b6 2.♔b4 ♙:c3 3.♔a3 ♘c2# (1)
 1.♔c5 ♘f6 2.♔d6 ♙:f4 3.♔e7 ♘c6# (1)
 1.♙b4 ♘:e6 2.♔b3 ♘c5 3.♔a3 ♙c1# (1)
 1.♙a5 ♙:f4 2.♘c3 ♘b6 3.♔b4 ♙d6# (1)
 1.♘a3 ♘:c3 2.♔b4 ♘e4 3.♔a4 ♘c5# (1)

№12



H#5 2 Sol 9+9

Guy SOBRECASES

Mat Plus 2008

- 1.e:f2 e3 2.♔c2+ ♔e2 3.♖h1 ♖:h1 4.f1♖
 ♖h8 5.♖b1 ♖c8# (2,5)
 1.♔c1 f3 2.e:f3 e:f3 3.♔c2+ ♔e2 4.♔c1
 ♔d3 5.♔d1 ♖:b1# (2,5)